



*Quality Management System*

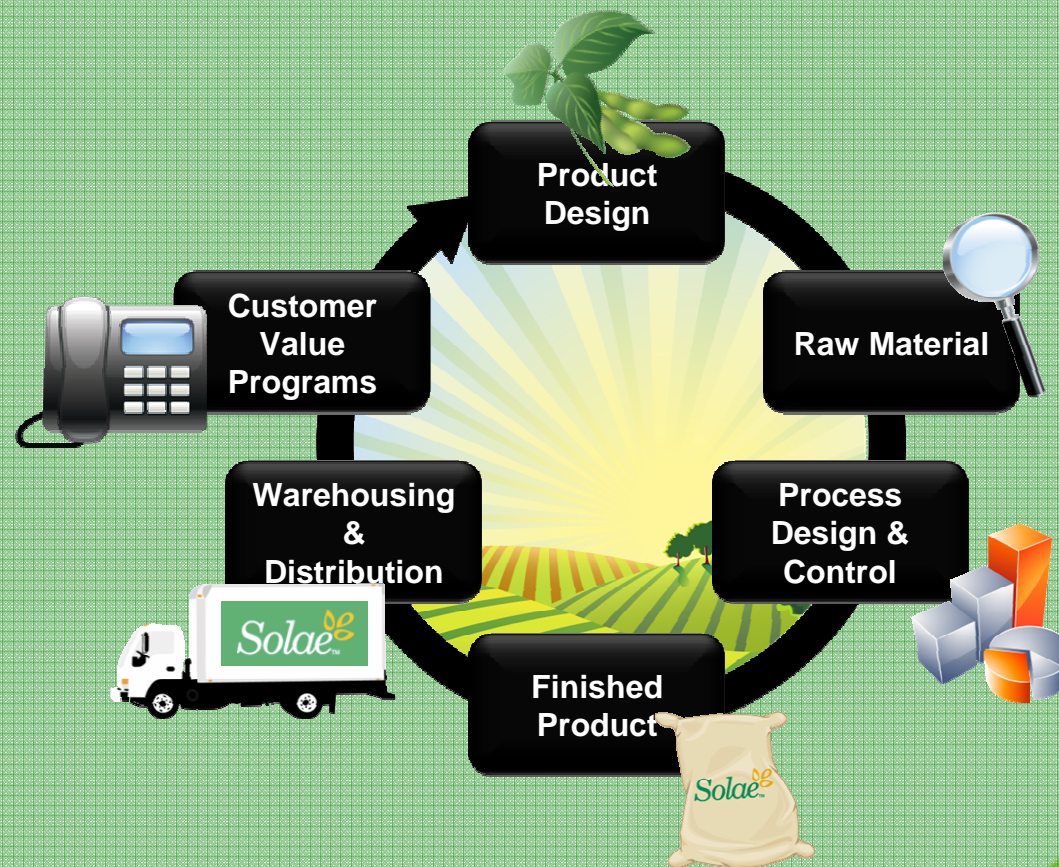


## Quality Management System

- Compliant and Relevant:
  - Modeled after ISO 9001: 2000
  - CFR 21 Part 110 Current Good Manufacturing Practice in the Manufacturing, Packaging and Holding of Human Food
  - Food Safety focus (HACCP)
  - Food Security focus (2002 Bioterrorism Act)
- Comprehensive:
  - Addresses entire supply chain.
  - Corporate and site procedures in one database
  - Management of Change
- Verified:
  - Customer audits
  - FPA/GMA-SAFE audits
  - SGS audits



## An Integrated Process



*Solae*<sup>™</sup>

Innovation through Nature



# Product Design

- Stage Gate Product Design Process.
  - Quality Assurance review at each gate.
  - Meet success criteria
  - Supported by good data
- Product Standards
  - Define each product
  - Chemical, Physical, Microbiological, Functional
  - Kosher, Halal
  - Consistency



## Raw Material Quality

- Ingredient Standards
- Approved Suppliers
- Traceability from raw material to customer receipt
- Identity preservation control to source
- Incoming raw material inspection.
- Supplier audit program



## Process Control

- Defined manufacturing procedures
- In-process testing and monitoring
- Hazard Analysis Critical Control Points (HACCP) plan for each production line





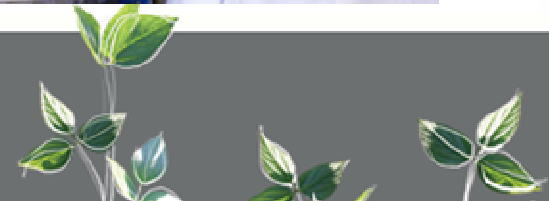
## HACCP and Prerequisite Programs

- HACCP control plans for:
  - Pathogens
  - Foreign matter
  - Chemicals
  - Allergens
  - IP
- Prerequisite Programs
  - Facility /equip. design
  - Supplier control
  - Product specifications
  - Operating procedures
  - SSOPs
  - GMPs
  - Training
  - Chemical control
  - Traceability and recall
  - Pest control
  - Inventory control



## Finished Product Testing & Control

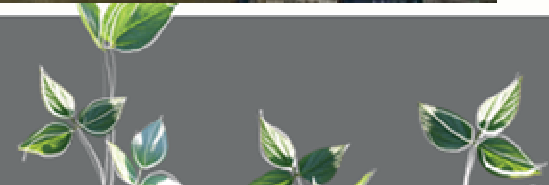
- Manufacturing standards define chemical, physical, microbiological requirements
- BOM
- LIMS/SAP
- Positive product release
- Product disposition and inventory control





## Warehousing & Distribution

- Inventory management (First In; First Out)
- Storage GMPs to ensure:
  - Pest, contamination and security control
- Shipping requirements:
  - Conveyance inspection
  - Documentation
  - Security control
- Strict GMPs required for outside warehouses and distributors



## Customer Support

- Customer information requests
- Certificates of Analysis
- Religious certifications (Halal and Kosher)
- Customer complaint resolution
- Technical support on quality concerns
- New product/application development support
- Special product, specification, handling, label requests



Thank You!



Innovation through Nature

